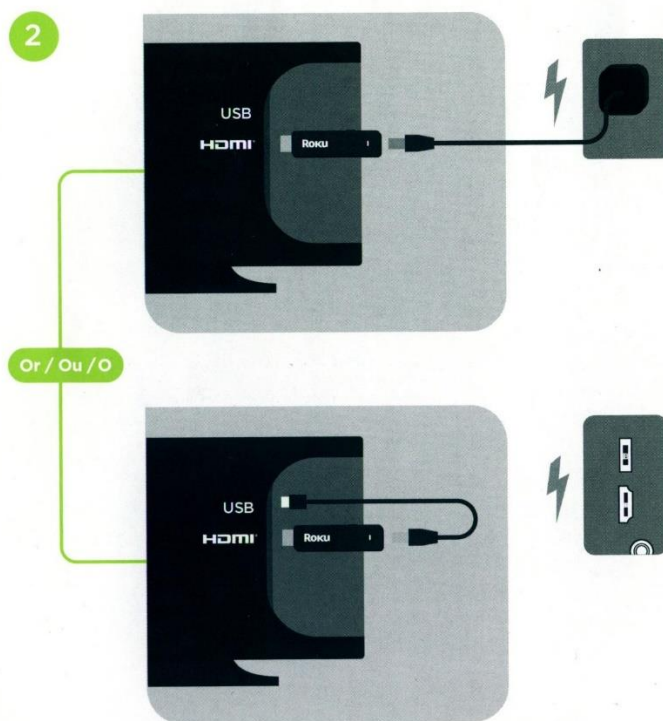


Setup Guide



You can set up the Roku Stick two ways:

- Attach the Roku Stick in the TV's HDMI input. Attach one end of the power cable to the back of the Roku stick and the other end of the cable in the Power Adapter. Plug the power adapter into an outlet.

OR

- Attach the Roku Stick in the TV's HDMI input. Attach one end of the power cable to the back of the Roku stick and the other end of the cable into the USB input on the TV.

Disclaimer: Electronic Devices tend to get warm with usage. When you are ready to remove the Roku Stick from the TV, carefully remove the power cable first, and wait at least 60 seconds before removing the Roku stick from the TV.